



KINGSTON

FOURWAYS



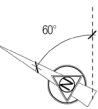
KINGSTON

FOURWAYS

Tyto has created Kingston – An urban three storey townhouse development based in Fourways. The face brick elements and gable ends in the architectural design, creates a contemporary, modern yet sleek urban home. All 40 homes are three storeys, with an open plan living and dining room, three bedrooms with three bathrooms and a guest WC, with some homes having an additional pyjama lounge. All homes have been meticulously designed with sophisticated finishes selected throughout. This is a truly unique development creating the ultimate dream home.

FEATURES:

- k Three storey, 3 bedroom, 3 bathrooms
- k Homes ranging in size from 164 sqm to 194 sqm
- k Modern Industrial kitchen with walk in scullery
- k Open plan living and dining room
- k Walk in dressers in the bedrooms
- k Guest WCs
- k All homes have their own garden
- k There is a clubhouse with a pause area, gym and pool
- k Running track around the entire development
- k Back up power and water



SITE PLAN
SCALE 1: 250 ON A1 PAGE
SCALE 1: 500 ON A3 PAGE

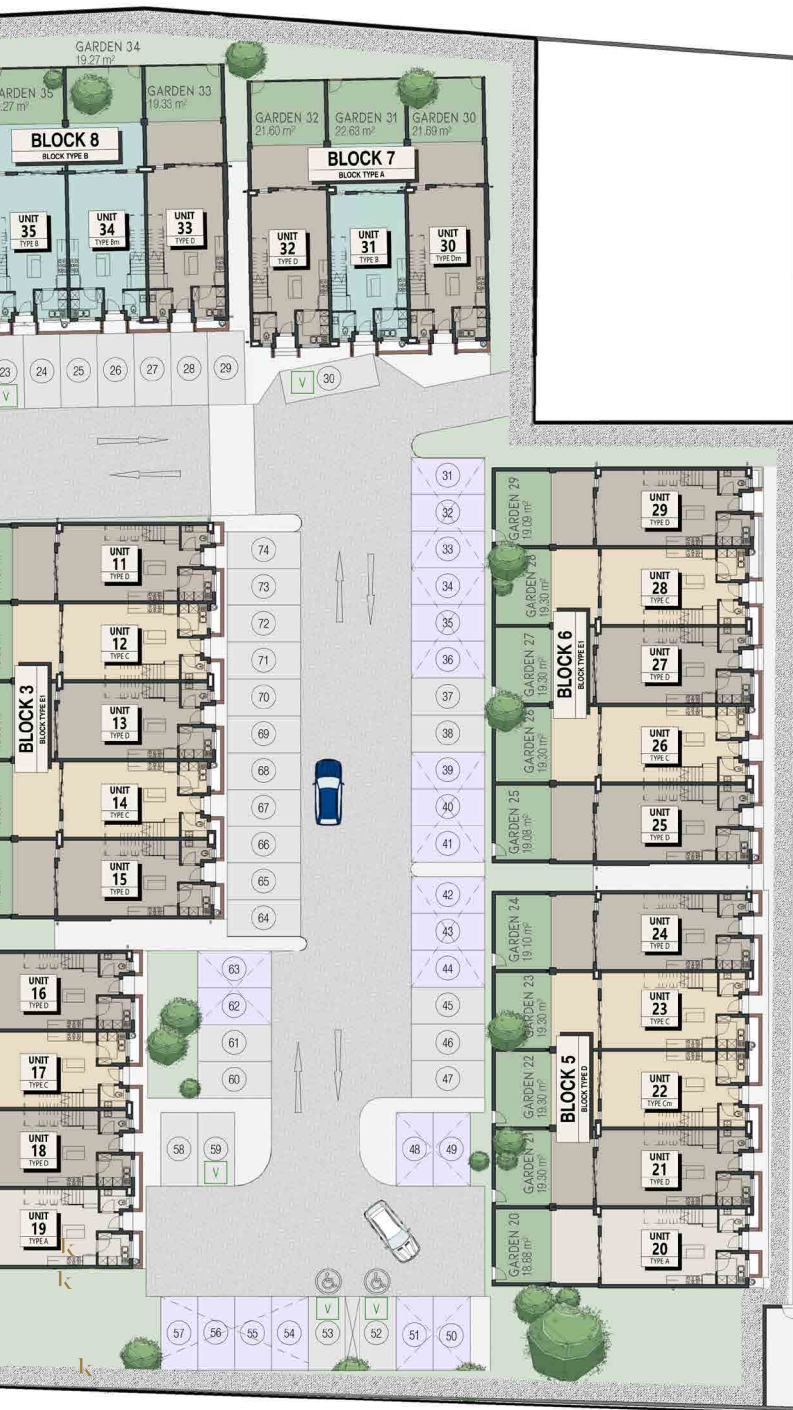
SITE PLAN



KINGSTON

FOURWAYS

- k FOURWAYS MALL
- k FOURWAYS CROSSING
- k DESIGN QUARTER
- k MONTECASINO
- k EPSOM DOWN SHOPPING CENTRE
- k FOURWAYS HIGH SCHOOL
- k BRESCIA HOUSE
- k BRYANDALE PRIMARY SCHOOL



UNIT TYPE KEY

- UNIT TYPE A
- UNIT TYPE B/BM
- UNIT TYPE C
- UNIT TYPE D/DM
- RUNNING TRACK

k 54 VAN RIEBEECK STREET, NORSCOT



KINGSTON

FOURWAYS

SCHEDULE

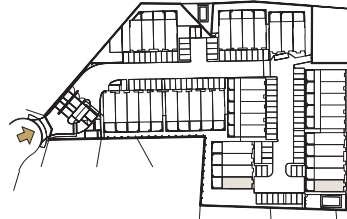
	UNIT NUMBER	UNIT TYPE	UNIT AREA	COVERED PATIO	OPEN PATIO/ TERRACE	TOTAL BUILT	SECTIONAL TITLE	GARDEN
BLOCK 1	UNIT 1	TYPE D	193.51 m ²	16.22 m ²	-	193.51 m ²	184.51 m ²	21.51 m ²
	UNIT 2	TYPE C	164.61 m ²	17.58 m ²	14.53 m ²	179.14 m ²	175.64 m ²	21.99 m ²
	UNIT 3	TYPE D	188.80 m ²	16.04 m ²	-	188.80 m ²	183.65 m ²	21.99 m ²
	UNIT 4	TYPE C	164.75 m ²	17.58 m ²	14.53 m ²	179.28 m ²	175.76 m ²	21.99 m ²
	UNIT 5	TYPE D	194.24 m ²	16.38 m ²	-	194.24 m ²	185.29 m ²	21.75 m ²
BLOCK 2	UNIT 6	TYPE D	193.51 m ²	16.22 m ²	-	193.51 m ²	184.51 m ²	21.53 m ²
	UNIT 7	TYPE C	164.61 m ²	17.58 m ²	14.53 m ²	179.14 m ²	175.64 m ²	22.02 m ²
	UNIT 8	TYPE D	188.80 m ²	16.04 m ²	-	188.80 m ²	183.65 m ²	22.02 m ²
	UNIT 9	TYPE C	164.75 m ²	17.58 m ²	14.53 m ²	179.28 m ²	175.76 m ²	22.02 m ²
	UNIT 10	TYPE D	194.24 m ²	16.38 m ²	-	194.24 m ²	185.29 m ²	21.77 m ²
BLOCK 3	UNIT 11	TYPE D	193.51 m ²	16.22 m ²	-	193.51 m ²	184.51 m ²	14.67 m ²
	UNIT 12	TYPE C	164.61 m ²	17.58 m ²	14.53 m ²	179.14 m ²	175.64 m ²	15.00 m ²
	UNIT 13	TYPE D	188.80 m ²	16.04 m ²	-	188.80 m ²	183.65 m ²	15.00 m ²
	UNIT 14	TYPE C	164.75 m ²	17.58 m ²	14.53 m ²	179.28 m ²	175.76 m ²	15.00 m ²
	UNIT 15	TYPE D	194.24 m ²	16.38 m ²	-	194.24 m ²	185.29 m ²	14.83 m ²
BLOCK 4	UNIT 16	TYPE D	193.54 m ²	16.22 m ²	-	193.54 m ²	184.52 m ²	23.44 m ²
	UNIT 17	TYPE C	164.23 m ²	17.56 m ²	14.53 m ²	178.76 m ²	175.66 m ²	23.96 m ²
	UNIT 18	TYPE D	188.64 m ²	16.04 m ²	-	188.64 m ²	183.70 m ²	23.96 m ²
	UNIT 19	TYPE A	165.54 m ²	17.74 m ²	-	165.54 m ²	158.04 m ²	23.44 m ²
BLOCK 5	UNIT 20	TYPE A	163.28 m ²	17.74 m ²	-	163.28 m ²	155.87 m ²	18.88 m ²
	UNIT 21	TYPE D	188.48 m ²	16.04 m ²	-	188.48 m ²	183.68 m ²	19.30 m ²
	UNIT 22	TYPE Cm	164.38 m ²	17.60 m ²	14.86 m ²	179.24 m ²	175.64 m ²	19.30 m ²
	UNIT 23	TYPE C	164.58 m ²	17.54 m ²	14.86 m ²	179.44 m ²	175.89 m ²	19.30 m ²
	UNIT 24	TYPE D	193.57 m ²	16.22 m ²	-	193.57 m ²	184.52 m ²	19.10 m ²
BLOCK 6	UNIT 25	TYPE D	194.24 m ²	16.38 m ²	-	194.24 m ²	185.29 m ²	19.08 m ²
	UNIT 26	TYPE C	164.75 m ²	17.58 m ²	14.53 m ²	179.28 m ²	175.76 m ²	19.30 m ²
	UNIT 27	TYPE D	188.80 m ²	16.04 m ²	-	188.80 m ²	183.65 m ²	19.30 m ²
	UNIT 28	TYPE C	164.61 m ²	17.58 m ²	14.53 m ²	179.14 m ²	175.64 m ²	19.30 m ²
	UNIT 29	TYPE D	193.51 m ²	16.22 m ²	-	193.51 m ²	184.51 m ²	19.09 m ²
BLOCK 7	UNIT 30	TYPE Dm	175.99 m ²	-	16.64 m ²	192.63 m ²	183.56 m ²	21.69 m ²
	UNIT 31	TYPE B	147.21 m ²	-	33.37 m ²	180.58 m ²	176.29 m ²	22.63 m ²
	UNIT 32	TYPE D	177.29 m ²	-	16.84 m ²	194.13 m ²	184.44 m ²	21.60 m ²
BLOCK 8	UNIT 33	TYPE D	176.15 m ²	-	17.19 m ²	193.34 m ²	183.80 m ²	19.33 m ²
	UNIT 34	TYPE Bm	146.78 m ²	-	33.09 m ²	179.87 m ²	175.63 m ²	19.27 m ²
	UNIT 35	TYPE B	147.13 m ²	-	33.01 m ²	180.14 m ²	175.91 m ²	19.27 m ²
	UNIT 36	TYPE Dm	177.28 m ²	-	16.85 m ²	194.13 m ²	184.31 m ²	18.85 m ²
BLOCK 9	UNIT 37	TYPE D	176.15 m ²	-	17.19 m ²	193.34 m ²	183.80 m ²	19.25 m ²
	UNIT 38	TYPE Bm	146.78 m ²	-	33.09 m ²	179.87 m ²	175.63 m ²	19.21 m ²
	UNIT 39	TYPE B	147.13 m ²	-	33.01 m ²	180.14 m ²	175.91 m ²	19.22 m ²
	UNIT 40	TYPE Dm	177.28 m ²	-	15.71 m ²	192.99 m ²	183.54 m ²	8.07 m ²



KINGSTON
FOURWAYS

TYPE A AREA SCHEDULE

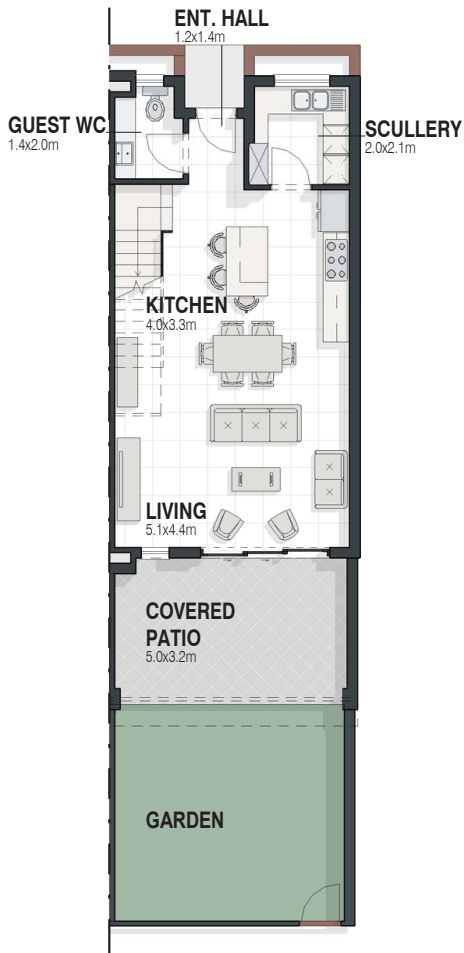
GROUND STOREY	
GROUND STOREY	56.18 m ²
DUCTS	0.42 m ²
COVERED PATIO	17.74 m ²
COV. ENT.	0.88 m ²
<hr/>	
FIRST STOREY	
FIRST STOREY	57.06 m ²
DUCTS	0.42 m ²
<hr/>	
SECOND STOREY	
SECOND STOREY	32.42 m ²
DUCTS	0.42 m ²
<hr/>	
UNIT AREA	165.54 m ²



TYPE A

BLOCK TYPE C & D

TOTAL AREA	165.54 m ²
SECTIONAL AREA	158.04 m ²



GROUND
SCALE 1 : 100 ON A3 PAGE
NORTH ORIENTATION AS PER SITE PLAN



FIRST STOREY
SCALE 1 : 100 ON A3 PAGE
NORTH ORIENTATION AS PER SITE PLAN



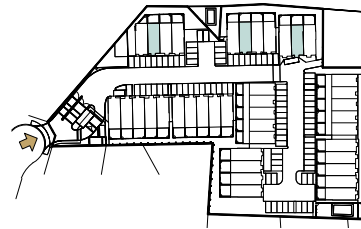
SECOND STOREY
SCALE 1 : 100 ON A3 PAGE
NORTH ORIENTATION AS PER SITE PLAN



KINGSTON FOURWAYS

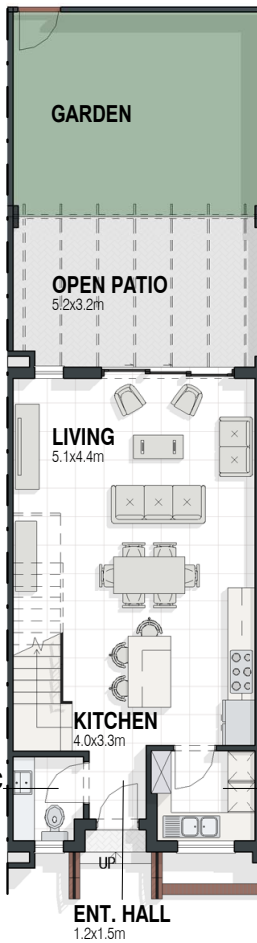
TYPE B AREA SCHEDULE

GROUND STOREY	
GROUND STOREY	54.24 m ²
DUCTS	0.40 m ²
COV. ENT.	0.59 m ²
<hr/>	
55.23 m ²	
FIRST STOREY	
FIRST STOREY	54.83 m ²
DUCTS	0.40 m ²
<hr/>	
55.23 m ²	
SECOND STOREY	
SECOND STOREY	36.31 m ²
DUCTS	0.44 m ²
<hr/>	
36.75 m ²	
<hr/>	
UNIT AREA	147.21 m ²
<hr/>	
OPEN AREA	
OPEN PATIO	18.49 m ²
OPEN TERRACE	14.88 m ²
<hr/>	
TOTAL AREA	180.58 m ²
SECTIONAL AREA	176.29 m ²



TYPE B

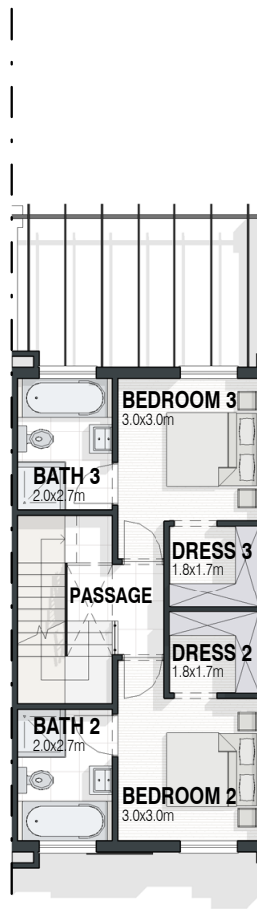
BLOCK TYPE A & B



GROUND

SCALE 1 : 100 ON A3 PAGE

NORTH ORIENTATION AS PER SITE PLAN



FIRST STOREY

SCALE 1 : 100 ON A3 PAGE

NORTH ORIENTATION AS PER SITE PLAN



SECOND STOREY

SCALE 1 : 100 ON A3 PAGE

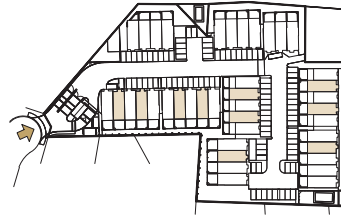
NORTH ORIENTATION AS PER SITE PLAN



KINGSTON
FOURWAYS

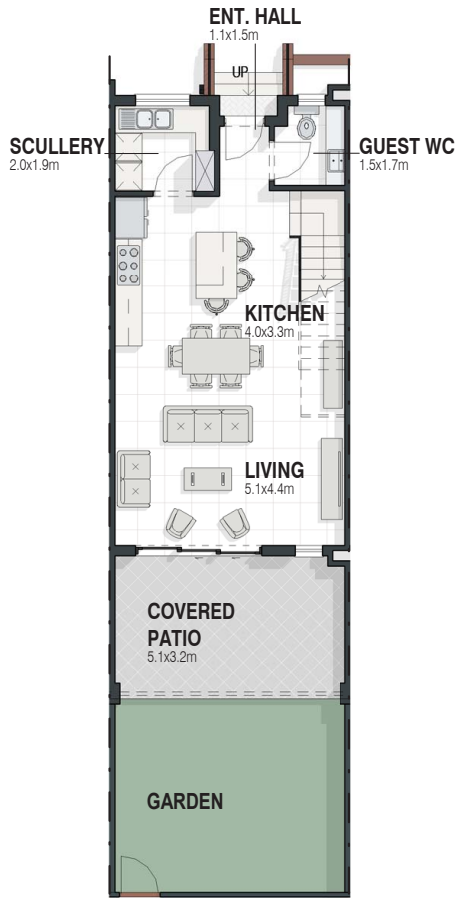
TYPE C AREA SCHEDULE

GROUND STOREY	
GROUND STOREY	54.15 m ²
DUCTS	0.28 m ²
COVERED PATIO	17.58 m ²
COV. ENT.	0.59 m ²
	72.60 m²
FIRST STOREY	
FIRST STOREY	54.84 m ²
DUCTS	0.28 m ²
	55.12 m²
SECOND STOREY	
SECOND STOREY	36.35 m ²
DUCTS	0.54 m ²
	36.89 m²
UNIT AREA	164.61 m²
OPEN AREA	
OPEN TERRACE	14.53 m ²
TOTAL AREA	179.14 m²
SECTIONAL AREA	175.64 m²



TYPE C

BLOCK TYPE C, D, E & E1



GROUND
SCALE 1 : 100 ON A3 PAGE
NORTH ORIENTATION AS PER SITE PLAN



FIRST STOREY
SCALE 1 : 100 ON A3 PAGE
NORTH ORIENTATION AS PER SITE PLAN



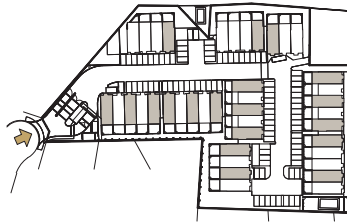
SECOND STOREY
SCALE 1 : 100 ON A3 PAGE
NORTH ORIENTATION AS PER SITE PLAN



KINGSTON
FOURWAYS

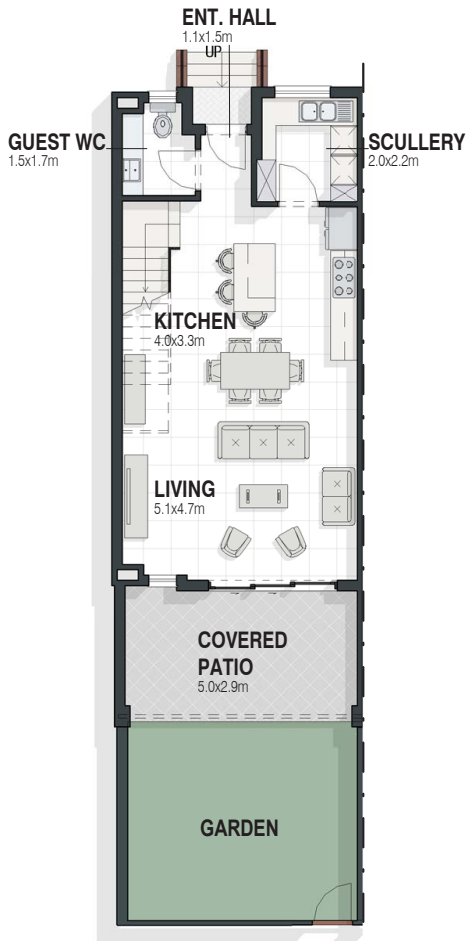
TYPE D AREA SCHEDULE

GROUND STOREY	
GROUND STOREY	58.06 m ²
DUCTS	0.40 m ²
COVERED PATIO	16.22 m ²
COV. ENT.	1.03 m ²
<hr/>	
75.71 m ²	
FIRST STOREY	
FIRST STOREY	59.73 m ²
DUCTS	0.50 m ²
<hr/>	
60.23 m ²	
SECOND STOREY	
SECOND STOREY	57.07 m ²
DUCTS	0.50 m ²
<hr/>	
57.57 m ²	
<hr/>	
UNIT AREA	193.51 m ²

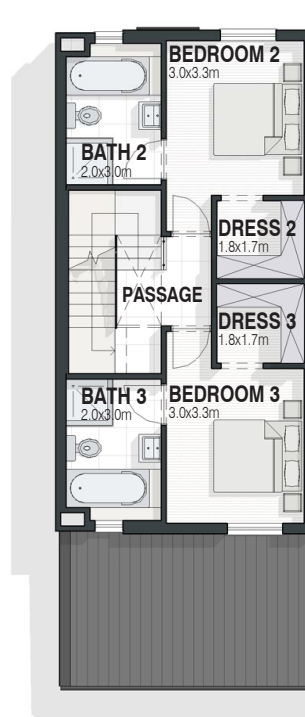


TYPE D

TOTAL AREA	193.51 m ²
SECTIONAL AREA	184.51 m ²



GROUND
SCALE 1 : 100 ON A3 PAGE
NORTH ORIENTATION AS PER SITE PLAN



FIRST STOREY
SCALE 1 : 100 ON A3 PAGE
NORTH ORIENTATION AS PER SITE PLAN



SECOND STOREY
SCALE 1 : 100 ON A3 PAGE
NORTH ORIENTATION AS PER SITE PLAN



KINGSTON
FOURWAYS

MAP



54 VAN RIEBEECK STREET, NORSCOT



To book a private viewing:

Elize Jansen
081 542 3784
elize@tyto.co.za

Bradley Fleming
076 740 5625
bradley@tyto.co.za

